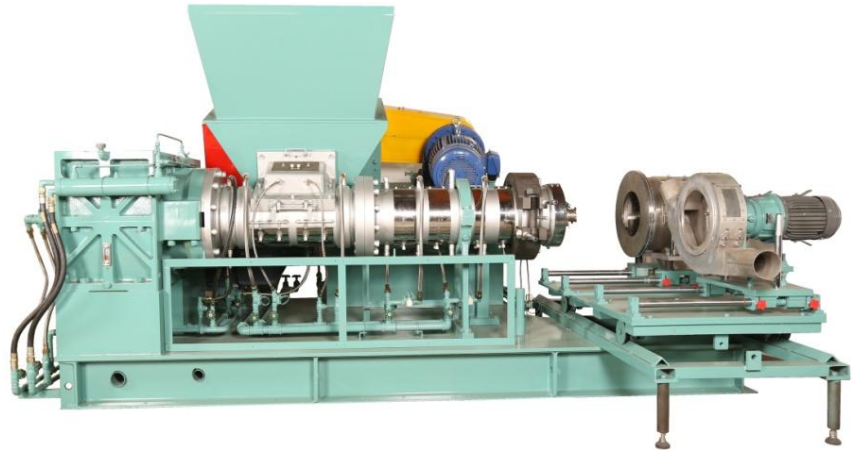


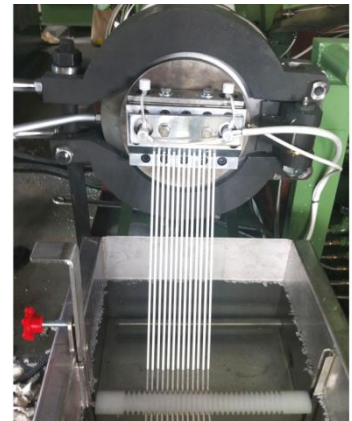
KNEADER MACHINERY CO., LTD.**FR 式 膠 粒 製 造 機****Feeder-Ruder Pellet Extruder****橡膠、塑膠及化學工業原料押出製粒用****Extrusion & Pelletizing for Rubber, Plastic & Chemical Industries****特 性：**

此機型強迫式入料押出造粒機，係將密練機混練完成之膠料，經由輸送機運送至本機之儲料槽後，由強迫式入料裝置將原料連續喂入單螺桿內，再經連續擠押及造粒。(造粒方式有：模頭熱切、模頭水環式、水中切與潛水拉條切粒等等)。

**FEATURES:**

This new model Feeder-Ruder Pellet Extruder usage for extruding and pellet producing after Plastic or Rubber compound mixing in the Dispersion Kneader and conveying to the hopper of this machine.

Pellets making method with mold Hot Face Cutting, Water ring cutting two, strand cutting and under water cutting.

**規 格 明 細 (Specification):**

機 型 Model	供料螺桿馬達 Feeder power	供料螺桿轉速 Feeder R.P.M.	儲料槽容量 Hopper Capa.	押出螺桿直徑 Extruder Dia.	押出螺桿馬力 Extruder power	押出螺桿轉速 Extruder R.P.M.	切粒馬力 Pellet cut power
KD-FR-50	3 HP	0 - 20	50 Liter	50 mm	10 HP	0 - 50	1/2 HP
KD-FR-75	3 HP	0 - 20	50 Liter	75 mm	15 HP	0 - 50	1 HP
KD-FR-100	5 HP	0 - 20	100 Liter	100 mm	20 HP	0 - 50	1 HP
KD-FR-125	7.5 HP	0 - 20	150 Liter	125 mm	50 HP	0 - 50	2 HP
KD-FR-160	10 HP	0 - 20	200 Liter	160 mm	75 HP	0 - 50	2 HP
KD-FR-180	10/15 HP	0 - 20	250 Liter	180 mm	100/125 HP	0 - 50	3 HP
KD-FR-200	15/20 HP	0 - 20	250 Liter	200 mm	125/150 HP	0 - 50	3 HP
KD-FR-250	25/30 HP	0 - 20	350 Liter	250 mm	150/200 HP	0 - 50	5 HP

以上各型號造粒機，均有可選擇配套之膠粒冷、篩選、儲存等設備

利拿機械工業股份有限公司

台灣一廠：台南市永康區興工路 3 號

台灣二廠：台南市永康區蔦松三街 81 巷 2 號

Factory 1: No.3 Shing Gong Road, Yongkang District, Tainan City, Taiwan.

Factory 2: No.2, Lane 81, Niaosong 3rd St., Yongkang District, Tainan City, Taiwan.

TEL: +886-6-2438586

FAX: +886-6-2434205

[HTTP://WWW.KNEADER.COM.TW](http://www.kneader.com.tw) EMAIL: SALES@KNEADER.COM.TW